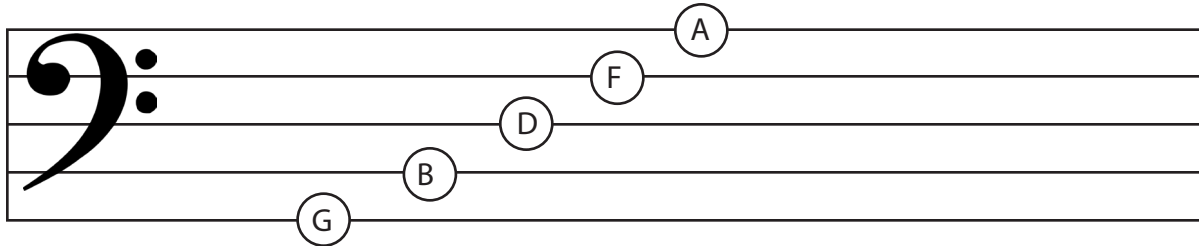


Learning to be a Sight Reading Bassist

Part One

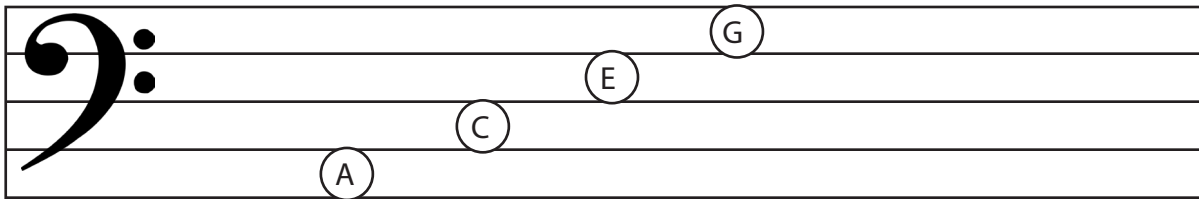
Learning the Lines of the Staff:

Each line of the bass cleff stands for a note. Study the staff below to memorize the line definitions. (Note: Some people find it helpful to take each note, starting from the bottom line and going up, and making a sentence that is easy to remember. For example: **Good Boys Do Fine Always.**)



Learning the Spaces of the Staff:

Each space of the bass cleff stands for a note. Study the staff below to memorize the space definitions. (Note: Some people find it helpful to take each note, starting from the bottom space and going up, and making a sentence that is easy to remember. For example: **All Cows Eat Grass.**)



Learning the Ledger Lines:

Notes can also be written on spaces and lines the are below and above the staff. To accurately notate these pitches we have to use small lines segments called Ledger Lines. Look at the staff below to see examples of ledger lines.

